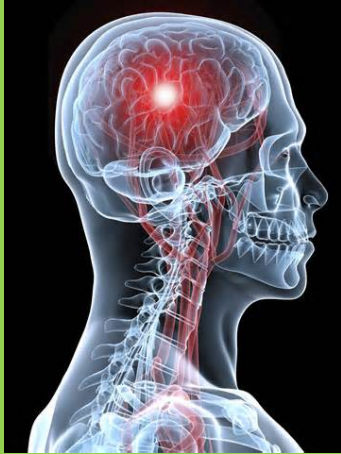


# Centegra Health System Clinical Documentation Tips

November 2015



**Questions?  
Contact your  
CDIS**

Lana Proffitt @  
759-8192

Mary Karlberg @  
759-8035

Josh Hobday @  
759-8031

Toni Schmidt @  
759-8188

Specify diagnosis and treatment for

## CVA

- Document and specify type:
  - Thrombotic
  - Embolic
  - Hemorrhagic
  - Occlusion
  - Other, specify
- Indicate Site
  - Vertebral
  - Basilar
  - Carotid
  - Cerebral
  - Cerebellar
- Laterality

**Documentation should reflect the following:**

- Cause of the condition
- The affected vessel
- Deficits caused by the CVA
- Alcohol, drug, tobacco use, abuse or dependence.

